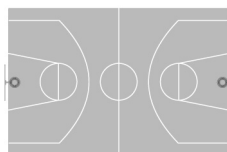




**WELCOME
TO
IN-POSITION
BASKETBALL
OFFICIATING
CAMP
2008**

**IN-POSITION
BASKETBALL OFFICIATING CAMP
P.O. BOX 140
WAYNE, PA 19087**



**IN-POSITION
BASKETBALL
OFFICIATING CAMP**



on
**the campus of
Haverford College**

in conjunction with
**Phil Martelli's
Team Basketball Camp**

**August 1st – August 3rd
2008**

The 2008 **In-Position Basketball Officiating Camp** will be conducted August 1st – August 3rd on the campus of Haverford College. The camp will be held in conjunction with Phil Martelli's Team Basketball Camp. All basketball officials, both male and female, who are interested in becoming better officials, are invited to attend. Enrollment will be limited to the first 60 officials to submit their paid deposit. Due to construction at Saint Joe's, camp will be held at Haverford College.

PURPOSE

In-Position Basketball Officiating Camp is designed to provide a more efficient system for the advancement of aspiring basketball officials. This camp provides a great opportunity for officials to advance from the J.V. to varsity level with the high school assignors. Several of our past campers have been hired at the Division II college level. The camp is designed to help officials reach their goals.

FORMAT

The weekend format should allow you to minimize any absence from work. Camp will begin at 5 p.m. on Friday and will end Sunday at 2 p.m. Your camp schedule may be changed if you will be a late arrival or if you have to depart early.

BEGINNING OFFICIAL

An opportunity to improve mechanics and gain experience from assignors and officials. An outstanding 6:1 official to mentor ratio will be observed. This will give you a great deal of individual attention.

VETERAN OFFICIAL

For those looking to make advancements in officiating, this camp may be what you are seeking. Several of our prior campers have advanced to the varsity high school level, as well as the junior college and collegiate levels.

COST

The cost of the camp will be \$135. Returning campers — \$100.

GAMES

All games will be played indoors using National Federation rules. Outstanding team competition will allow for closely contested games. A select number of games will be videotaped to enable camper's detailed review.

CLASSROOM INSTRUCTION

Classroom instruction will be used to discuss game situations along with rules interpretations. Also, veteran collegiate officials will discuss how they have progressed through the officiating ranks, working their way to the collegiate level.



STAFF

-HIGH SCHOOL ASSIGNORS-

Tom Brady	District 1 Representative, PAC 10 Assignor
Mike Chesney	JV Catholic League
Don Ciminera	Women's MAAC, America East, Ivy League Official, Girls Catholic League Assignor
Bob Donato	Atlantic 10, ACC, Big East, SEC, Patriot, Ivy League Official, Boys Central League Assignor, NCAA Final Four Official
James Smith	Philadelphia Charter Schools Assignor
Bill Stephens	Boys/Girls Del Val, Girls Central League Assignor
Walter Yost	Patriot, Ivy, PAC League Observer, Boys/Girls Suburban One and Bicentennial League Assignor

-COLLEGE ASSIGNORS-

Owen Hannah	Mens/Womens Pennsylvania State Athletic Conference Assignor (Division II)
--------------------	---

-STAFF-

Tom Blackwell	Women's NCAA Division III Final Four Official 2003
Jeff Clark	ACC, A-10, Big East, Ivy, Patriot League Official
Brian Dorsey	ACC, Colonial, NEC, MAAC Official, A-10, Horizon League Official
Greg Durrah	Ivy, Patriot League, MEAC Official
John Gaffney	Big East, Ivy, Patriot League, A-10, MAAC Official
Tim Kelly	ACC, Big South, Colonial, Ivy, Patriot League Official
Matt Curtin	Big South, NEC Official
Jeff Wagner	Colonial, Southern, A-Sun Official

-NBA Official-

To be announced	Prior speakers: Steve Javie, Mark Wunderlich, Duke Callahan, Zack Zarba, Ed Malloy
------------------------	--

CAMP APPLICATION

PLEASE NOTE:

We do not provide health and accident insurance. Also, you are required to sign a complete physical exam waiver before you can attend the camp. A separate form will be sent to you at a later date.

**Remember, camp space is limited...
Camp has been sold out four years in a row!**

Full Name: _____

Mailing Address: _____

Home Phone: _____

Work Phone: _____

Age: _____ Height: _____ Wt: _____

Size: Shirt: _____ Shorts: _____

E-Mail: _____

Would like to work 3-man _____

Medical Insurance Carrier: _____

Group #: _____

*** Remember — \$100 for returning campers ***

Total Cost \$135

Enclosed is a check for my \$100 non-refundable deposit.

Enclosed is a check for my full payment.



Make checks payable to:
IN-POSITION OFFICIATING CAMP
P.O. Box 140
Wayne, PA 19087
610-353-1684
Contact—Tim Kelly
tkelly@officialkellybenefits.com