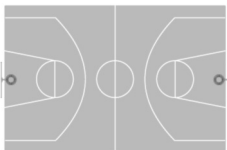




**WELCOME  
TO  
IN-POSITION  
BASKETBALL  
OFFICIATING  
CAMP  
2011**

**IN-POSITION  
BASKETBALL OFFICIATING CAMP  
P.O. BOX 140  
WAYNE, PA 19087**



**IN-POSITION  
BASKETBALL  
OFFICIATING CAMP**



on  
**“Hawk Hill”**

in conjunction with  
**Phil Martelli’s  
Team Basketball Camp**

**July 29<sup>th</sup> – July 31<sup>st</sup>  
2011**

## STAFF

### -HIGH SCHOOL ASSIGNORS-

<b>Tom Brady</b>	District 1 Representative, PAC 10 Assignor
<b>Don Ciminera</b>	Girls Catholic League Assignor
<b>*Bob Donato</b>	Atlantic 10, ACC, Big East, SEC, Boys Central League Assignor, NCAA Final Four Official
<b>James Smith</b>	Philadelphia Charter Schools Assignor
<b>Mike Chesney</b>	DeVal League, Catholic League JV

### -COLLEGE ASSIGNORS-

<b>Owen Hannah</b>	Mens/Womens Pennsylvania State Athletic Conference Assignor (Division II)
<b>Tim McAleer</b>	Mens CACC Assignor (Division II)

### -STAFF-

<b>Tom Blackwell</b>	Women's NCAA Division III Final Four Official 2003
<b>*Jeff Clark</b>	ACC, A-10, Big East, Ivy, Patriot, CAA Official
<b>*Brian Dorsey</b>	ACC, Colonial, NEC, MAAC, A-10, Horizon League, Big 10
<b>Greg Durrah</b>	Ivy, Patriot League, MEAC Official
<b>*John Gaffney</b>	Big East, ACC, Horizon, A-10, MAAC, A-10, America East
<b>*Tim Kelly</b>	ACC, Big South, Colonial, Ivy, A-10, NEC, America East, Patriot
<b>Matt Curtin</b>	CAA, NEC Official
<b>Jeff Wagner</b>	Colonial, Southern, A-Sun Official
<b>*Jamie Luckie</b>	2010 Final Four Official
<b>*Ray Perone</b>	A-10, NEC, America East, Big East, ACC
<b>*Jeff Nichols</b>	ACC, America East, Big South, NEC, CAA

### -NBA Official-

**To be announced** Prior speakers: Steve Javie, Mark Wunderlich, Duke Callahan, Zack Zarba, Ed Malloy

\* worked the NCAA Tournament

The 2011 **In-Position Basketball Officiating Camp** will be conducted July 29th – July 31st on the campus of St. Joseph's University. The camp will be held in conjunction with Phil Martelli's Team Basketball Camp. All basketball officials, both male and female, who are interested in becoming better officials, are invited to attend. Enrollment will be limited to the first 60 officials to submit their paid deposit.

### PURPOSE

**In-Position Basketball Officiating Camp** is designed to provide a more efficient system for the advancement of aspiring basketball officials. This camp provides a great opportunity for officials to advance from the J.V. to varsity level with the high school assignors. Several of our past campers have been hired at the Division II college level. The camp is designed to help officials reach their goals.

### FORMAT

The weekend format should allow you to minimize any absence from work. Camp will begin at 5 p.m. on Friday and will end Sunday at 2 p.m. Your camp schedule may be changed if you will be a late arrival or if you have to depart early.

### BEGINNING OFFICIAL

An opportunity to improve mechanics and gain experience from assignors and officials. An outstanding 6:1 official to mentor ratio will be observed. This will give you a great deal of individual attention.

### VETERAN OFFICIAL

For those looking to make advancements in officiating, this camp may be what you are seeking. Several of our prior campers have advanced to the varsity high school level, as well as the junior college and collegiate levels.

### COST

The cost of the camp will be \$135.



### GAMES

All games will be played indoors using National Federation rules. Outstanding team competition will allow for closely contested games. A select number of games will be videotaped to enable camper's detailed review.

### CLASSROOM INSTRUCTION

Classroom instruction will be used to discuss game situations along with rules interpretations. Also, veteran collegiate officials will discuss how they have progressed through the officiating ranks, working their way to the collegiate level.

## CAMP APPLICATION

### PLEASE NOTE:

We do not provide health and accident insurance. Also, you are required to sign a complete physical exam waiver before you can attend the camp. A separate form will be sent to you at a later date.

**Remember, camp space is limited...  
Camp has been sold out five years in a row!**

Full Name: \_\_\_\_\_

Mailing Address: \_\_\_\_\_

Home Phone: \_\_\_\_\_

Work Phone: \_\_\_\_\_

Age: \_\_\_\_\_ Height: \_\_\_\_\_ Wt: \_\_\_\_\_

Size: Shirt: \_\_\_\_\_ Shorts: \_\_\_\_\_

E-Mail: \_\_\_\_\_

Number of years officiating: \_\_\_\_\_

Would like to work 3-man \_\_\_\_\_

Medical Insurance Carrier: \_\_\_\_\_

Group #: \_\_\_\_\_

**Total Cost \$135**

Enclosed is a check for my \$100 non-refundable deposit.

Enclosed is a check for my full payment.



Make checks payable to:  
**TIM KELLY**  
P.O. Box 140  
Wayne, PA 19087  
610-353-1684  
Contact-Tim Kelly  
tkelly@officialkellybenefits.com